
Extended Comments for A/P Checks

AP-1015

Overview

This Extended Solution provides a conversion utility of the AP-1015 Open Invoice Extended Comments, entered prior to version 4.20, to an AP Invoice Custom Office User Defined Field.

After converting to v 4.20, you will need to establish a 'Comment' User Defined Field with a maximum length of 216 characters in the following tables:

- A/P Invoice Header
- A/P Invoice History Header
- A/P Open Invoice

In order for data conversion to work properly, the Invoice History Header and the Open Invoice UDF must be named the same. Make sure all UDFs have appropriate data sources defined for each.

Installation

Before installing this Extended Solution, please verify that the version level(s) printed on the CD label are the same as the version level(s) of the MAS 90 MAS 200 module(s) you are using. For further information, please see the Upgrades and Compatibility section below. Check your Shipping Manifest for a complete list of Extended Solutions shipped.

For detailed installation instructions, please refer to the Sage website at:

http://support.sagesoftwareonline.com/mas/extended_solutions/main.cfm

Installing Your Extended Solutions under Windows

From a CD

If you have the *autorun* function turned on for your PC, the installation program will start up automatically. If not, find the **autorun.exe** file on your CD-ROM drive and double-click it to start the installation program. Follow the on-screen instructions.

From the Sage FTP site

When your Extended Solution is ready to be downloaded, you will receive an email from 'extendedsolutions.na@sage.com' telling you that it is ready. The email will contain the Customer Name, Cross Reference, a case-sensitive Password, a link via which you can download your Extended Solution, instructions, and a Shipping Manifest. If you have any problems with this order, please email extendedsolutions.na@sage.com and we will assist you during normal business hours.

Extended Solutions

Extended Solutions Control Center

Installing any Extended Solution will add an Extended Solutions Control Center to the MAS 90 MAS 200 Library Master Utilities menu. When you open the Control Center, the following options will be available:

- Extended Solutions Manuals
- Remove Extended Solutions
- Unlock Extended Solutions
- Merge Installation Files
- Extended Solutions Setup options

Setup

Upon completion of software installation, you will need to access Extended Solutions Setup from the Accounts Payable Setup menu. Select this part number and the Setup screen for this Extended Solution will appear (Figure 1). Check the 'Enable Extended Solution' box to activate this Extended Solution. The manual for this Extended Solution can be viewed by clicking the 'Manual' button next to the 'Enable Extended Solution' check box. It can also be viewed via the Extended Solutions Control Center (see Installation, above).

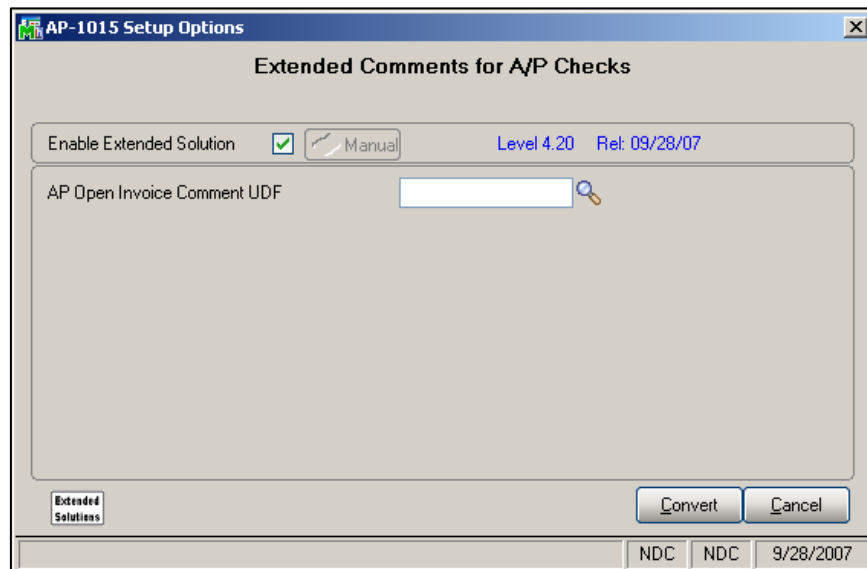


Figure 1

Answer the following prompt:

AP OPEN INVOICE COMMENT UDF: Specify a string type UDF.

The standard comment field and the 6 extended comment fields will be converted into the specified UDF. The maximum length is 216 characters (7 * 30 characters + 6 spaces). Click

Extended Solutions

the Convert button to start the conversion. When the conversion finishes, this Extended Solution will be disabled. Please go to the Extended Solutions Control Center in Library Master to remove this Extended Solution.

What's New

With the 09-28-07 release:

- provided conversion utility

Upgrades and Compatibility

The installation CD is labeled with the version of the MAS 90 MAS 200 module for which this Extended Solution was prepared. This Extended Solution will check its compatibility with the appropriate MAS 90 MAS 200 modules and will be disabled if an incompatibility is found. If you upgrade your MAS 90 MAS 200 modules, this Extended Solution must be upgraded as well. Your MAS 90 MAS 200 dealer can supply this upgrade.

Documentation

Only changes made to the standard operation of MAS 90 MAS 200 have been documented in this manual. Operations not documented in this manual are standard procedures of MAS 90 MAS 200 processing. Standard MAS 90 MAS 200 processes, data entry screens, inquiry screens, reports, updates, etc., have not been changed unless addressed in this document.

Parts of this document may refer to the *Specific Purpose Rule*. When referenced, the described feature was developed for a specific client to its specifications and may not conform to generally accepted MAS 90 MAS 200 standards and procedures. These features may or may not benefit you in your application of MAS 90 MAS 200.

Acknowledgments

© 2005 Sage Software, Inc. All rights reserved. Sage Software, MAS 90 and MAS 200 are registered trademarks or trademarks of Sage Software, Inc. All other trademarks are the property of their respective owners.