

## Customer Number Prompt/Display on A/P Invoice Line

AP-1091

### Overview

This Extended Solution to the Accounts Payable module allows you to associate A/P Invoice Distribution lines with particular Customers.



In order for this Extended Solution to be enabled, the Job Cost module cannot be enabled.



Sage Software Extended Solution CM-1001, *Enhanced Custom Office User Defined Fields*, must be installed and enabled for this Extended Solution to function.

### Installation

Before installing this Extended Solution, please verify that the version level(s) printed on the CD label are the same as the version level(s) of the MAS 90 MAS 200 module(s) you are using. For further information, please see the Upgrades and Compatibility section below. Check your Shipping Manifest for a complete list of Extended Solutions shipped.

For detailed installation instructions, please refer to the Sage website at:

[http://support.sagesoftwareonline.com/mas/extended\\_solutions/main.cfm](http://support.sagesoftwareonline.com/mas/extended_solutions/main.cfm)

#### ***Installing Your Extended Solutions under Windows***

##### **From a CD**

If you have the *autorun* function turned on for your PC, the installation program will start up automatically. If not, find the **autorun.exe** file on your CD-ROM drive and double-click it to start the installation program. Follow the on-screen instructions.

##### **From the Sage FTP site**

When your Extended Solution is ready to be downloaded, you will receive an email from 'extendedsolutions.na@sage.com' telling you that it is ready. The email will contain the Customer Name, Cross Reference, a case-sensitive Password, a link via which you can download your Extended Solution, instructions, and a Shipping Manifest. If you have any problems with this order, please email [extendedsolutions.na@sage.com](mailto:extendedsolutions.na@sage.com) and we will assist you during normal business hours.

#### ***Extended Solutions Control Center***

Installing any Extended Solution will add an Extended Solutions Control Center to the MAS 90 MAS 200 Library Master Utilities menu. When you open the Control Center, the following options will be available:

## Extended Solutions

- Extended Solutions Manuals
- Remove Extended Solutions
- Unlock Extended Solutions
- Merge Installation Files
- Extended Solutions Setup options

**Custom Office**

If you customize your MAS 90 MAS 200, then you must run the Update Utility *every time* you install this Extended Solution.

**Setup**

Once the disk is installed, you will need to access the Accounts Payable options screen. After the standard MAS 90 MAS 200 option screens have been displayed, a Setup screen for this Extended Solution will appear. Check the 'Enable Extended Solution' box to activate this Extended Solution (Figure 1). The manual for this Extended Solution, if it has been installed, can be viewed by clicking the 'Manual' button next to the 'Enable Extended Solution' check box. It can also be viewed via the Extended Solutions Control Center (see Installation, above).

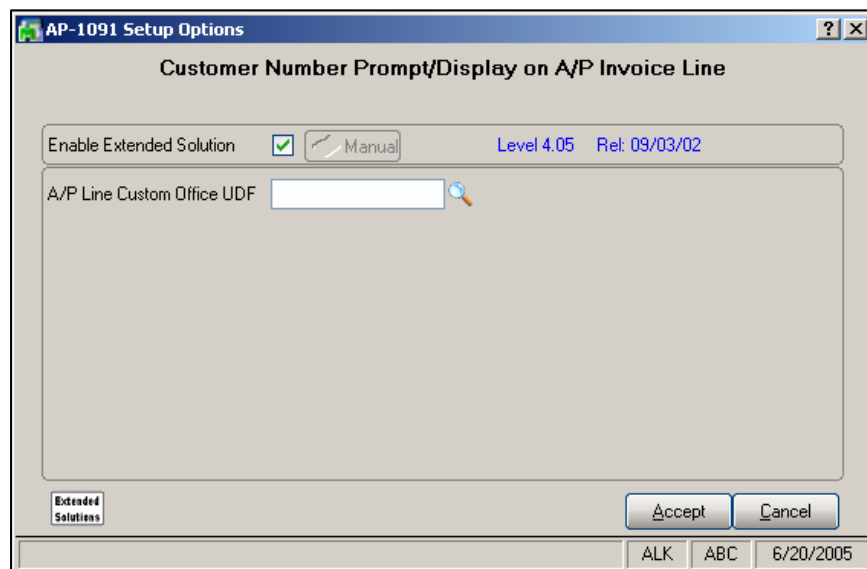


Figure 1

Answer the following prompts:

**A/P LINE CUSTOM OFFICE UDF:** Enter an A/P Line Custom Office UDF with a CM-1001 special type of AR Customer Number.

## Extended Solutions

You should visit this Setup screen after each upgrade or reinstallation of this Extended Solution.

### Operation

The G/L Account Description that displays in the list box will show the full G/L Account number (Figure 2). To the right of the 'Description' column will be two new columns with the heading 'Customer Name' that will display the customer number and the customer name. The customer number will come from the UDF specified in Setup. The 'Customer Name' field will display as much of the name as is available within the space provided to the left of the 'Amount' field.

The screenshot shows the 'A/P Invoice Data Entry' window. At the top, there are fields for 'Vendor No.' (01-AIRWAY) and 'Invoice No.' (12300). Below these are tabs for '1. Header' and '2. Lines'. The main area contains a table with the following data:

Line	G/L Account	Description	Customer	Amount
1	555-0000000000-0300000000	Rent	01-ABF American Bu	8.00
2	101-0100000000-0000000000	Cash in ba	01-AVNET Avnet Proce	2.00

At the bottom of the window, there are buttons for 'Accept', 'Cancel', and 'Delete', along with a status bar showing 'NDC ABC 7/1/2004'.

Figure 2

This same modified display will be applied to A/P Invoice History Drill down (Figure 3).

## Extended Solutions

G/L Account	Description	Customer	Amount
120-000000000-0000000	Prepaid in	01-ABF American Busine	1.00
101-010000000-0000000	Cash in ba	01-BRESLIN Breslin Parts S	1.00
101-020000000-0000000	Cash in ba	01-HILLSB Hillsboro Servi	1.00
101-030000000-0000000	Cash in ba	01-RSSUPPL R & S Supply Co	1.00
105-000000000-0100000	Accts. rec	01-SHEPARD Shepard Motorwo	1.00
105-000000000-0200000	Accts. rec	02-AUTOCR Autocraft Acces	1.00
115-000000000-0200000	Inventory	02-BAYPYRO Bay Pyrotronics	1.00
115-000000000-0200000	Inventory	02-JELLCO Jellico Packing	43.00

Figure 3

### Upgrades and Compatibility

The installation CD is labeled with the version of the MAS 90 MAS 200 module for which this Extended Solution was prepared. This Extended Solution will check its compatibility with the appropriate MAS 90 MAS 200 modules and will be disabled if an incompatibility is found. If you upgrade your MAS 90 MAS 200 modules, this Extended Solution must be upgraded as well. Your MAS 90 MAS 200 dealer can supply this upgrade.

### Documentation

Only changes made by Sage Software, Inc. to the standard operation of Sage Software, Inc. MAS 90 MAS 200 have been documented in this manual. Operations not documented in this manual are standard procedures of MAS 90 MAS 200 processing. Standard MAS 90 MAS 200 processes, data entry screens, inquiry screens, reports, updates, etc., have not been changed unless addressed in this document.

Parts of this document may refer to the *Specific Purpose Rule*. When referenced, the described feature was developed for a specific client to its specifications and may not conform to generally accepted MAS 90 MAS 200 standards and procedures. These features may or may not benefit you in your application of MAS 90 MAS 200.

### Acknowledgments

© 2005 Sage Software, Inc. All rights reserved. Sage Software, MAS 90, and MAS 200 are registered trademarks or trademarks of Sage Software, Inc. All other trademarks are the property of their respective owners.