

Restricted Invoice Selection

AP-1098

Overview

This Extended Solution to the standard MAS 90 MAS 200 Accounts Payable module modifies the A/P Payment Selection processing of Invoices that originated in the Purchase Order module. It will only select invoices that have a sufficient P/O ROG on file for all of the line quantities recorded on the P/O Receipt of Invoice.

Invoices entered in the system via A/P Invoice Entry will be unaffected by this Extended Solution.



The A/P Setup question 'Track Detailed Invoice/Payment History' must be checked in order to enable this Extended Solution.

Installation

Before installing this Extended Solution, please verify that the version level(s) printed on the CD label are the same as the version level(s) of the MAS 90 MAS 200 module(s) you are using. For further information, please see the Upgrades and Compatibility section below. Check your Shipping Manifest for a complete list of Extended Solutions shipped.

For detailed installation instructions, please refer to the Sage website at:

http://support.sagesoftwareonline.com/mas/extended_solutions/main.cfm

Installing Your Extended Solutions under Windows From a CD

If you have the *autorun* function turned on for your PC, the installation program will start up automatically. If not, find the **autorun.exe** file on your CD-ROM drive and double-click it to start the installation program. Follow the on-screen instructions.

From the Sage FTP site

When your Extended Solution is ready to be downloaded, you will receive an email from 'extendedsolutions.na@sage.com' telling you that it is ready. The email will contain the Customer Name, Cross Reference, a case-sensitive Password, a link via which you can download your Extended Solution, instructions, and a Shipping Manifest. If you have any problems with this order, please email extendedsolutions.na@sage.com and we will assist you during normal business hours.

Extended Solutions Control Center

Installing any Extended Solution will add an Extended Solutions Control Center to the MAS 90 MAS 200 Library Master Utilities menu. When you open the Control Center, the following options will be available:

Extended Solutions

- Extended Solutions Manuals
- Remove Extended Solutions
- Unlock Extended Solutions
- Merge Installation Files
- Extended Solutions Setup options

Setup

Once the disk is installed, you will need to access the Accounts Payable options screen. After the standard MAS 90 MAS 200 option screens have been displayed, a Setup screen for this Extended Solution will appear. Check the 'Enable Extended Solution' box to activate this Extended Solution (Figure 1). The manual for this Extended Solution, if it has been installed, can be viewed by clicking the 'Manual' button next to the 'Enable Extended Solution' check box. It can also be viewed via the Extended Solutions Control Center (see Installation, above).

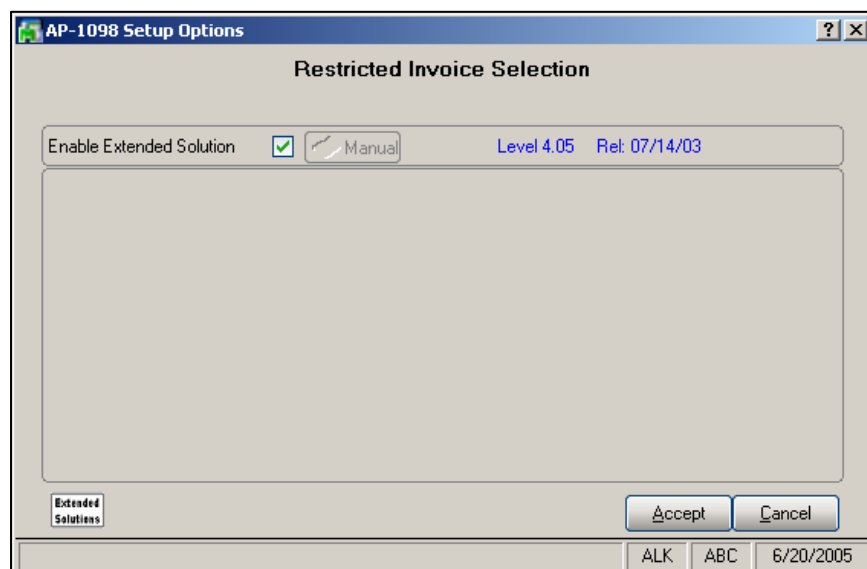


Figure 1

You should visit this Setup screen after each upgrade or reinstallation of this Extended Solution.

Operation

This Extended Solution modifies the logic in the A/P Payment Selection Register to only select Invoices whose source is 'PO', if the program has received at least all of the line quantities recorded on the Invoice. The program will compare the 'Quantity Invoiced' and 'Quantity Paid' in a new file to the 'Quantity Received' in the P/O Line Detail file. If the 'Qty

Extended Solutions

'Invoiced' is *less than or equal to* the 'Quantity Received' – 'Quantity Paid' for **every line** of the Invoice then the program will select that Invoice for payment and store the 'Quantity Paid' in a separate file to be used later during update. Invoices whose source is AP will be processed per standard MAS 90 MAS 200 rules.

An Exception Report will print after the A/P Payment Selection Register that will detail any Invoices in the standard selected range that did not meet these Receipt of Goods criteria (Figure 2). The reports sort in 'Invoice Number' order.

		QTY	QTY	QTY
		ORDERED	RECEIVED	INVOICED
Simply Delicious & Natural Food				
AP PAYMENT SELECTION EXCEPTION REPORT				
INVOICE NO:	123	INVOICE DATE:	07/17/03	PO NO: 0000251
VENDOR NO:	01-AIRWAY			PO DATE: 07/17/03
Misc Item #1		100.00	.00	25.00
A different item		50.00	.00	.00
10 GAUGE INDOOR WIRE		50.00	.00	50.00
special item		45.00	.00	.00
	QTY TOTAL:	245.00	.00	75.00
			NET INVOICE:	\$656.50
			FREIGHT:	\$.00
			TAX:	\$.00
			INVOICE TOTAL:	\$656.50

Figure 2

As the Check Register is updated, the program will update the 'Quantity Paid' in the new file.

In order to assure the continuity of the data in the file, the program will prevent the user from editing the 'Discount Amount' or 'Payment Amount' fields in 'Check Maintenance' for any Invoices whose source is 'PO' by disabling them (Figure 3).

Figure 3

Manual Checks

Any P/O Invoices paid via manual check will not perform the above processing to see if it is eligible for payment. However, Manual Check Processing will update 'Quantity Paid' information to the new file.

Period End

Records will be purged from the new file as Purchase Orders are purged in Period End, as well as when Purchase Orders or their lines are deleted.

Vendor Change/Merge/Delete

Records will be changed accordingly in the new file whenever Vendor Change/Merge/Delete has been invoked.

Crystal Reports and the ODBC Dictionary

The files listed below have been added or changed in the ODBC Dictionaries by this Extended Solution for Crystal Reports purposes.

<i>File:</i>	<i>Description</i>	<i>Field:</i>
AP_R1	PO Quantities Paid and Inv	
AP_R2	Restricted Invoice Selection	

Be aware that the ODBC Dictionaries may contain other files and data fields that will be unavailable without their corresponding Extended Solutions installed.

Upgrades and Compatibility

The installation CD is labeled with the version of the MAS 90 MAS 200 module for which this Extended Solution was prepared. This Extended Solution will check its compatibility with the appropriate MAS 90 MAS 200 modules and will be disabled if an incompatibility is found. If you upgrade your MAS 90 MAS 200 modules, this Extended Solution must be upgraded as well. Your MAS 90 MAS 200 dealer can supply this upgrade.

Documentation

Only changes made by Sage Software, Inc. to the standard operation of Sage Software, Inc. MAS 90 MAS 200 have been documented in this manual. Operations not documented in this manual are standard procedures of MAS 90 MAS 200 processing. Standard MAS 90 MAS 200 processes, data entry screens, inquiry screens, reports, updates, etc., have not been changed unless addressed in this document.

Parts of this document may refer to the *Specific Purpose Rule*. When referenced, the described feature was developed for a specific client to its specifications and may not conform to generally accepted MAS 90 MAS 200 standards and procedures. These features may or may not benefit you in your application of MAS 90 MAS 200.

Acknowledgments

© 2005 Sage Software, Inc. All rights reserved. Sage Software, MAS 90, and MAS 200 are registered trademarks or trademarks of Sage Software, Inc. All other trademarks are the property of their respective owners.