
Check Number Update by Bank ID Across Company Codes

AP-1100

Overview

This Extended Solution to the Accounts Payable module prohibits entry into A/P Check Printing and Manual Check Entry when the Bank ID for the Bank Code being referenced is in use by one of these processes in another Company Code. It also resets the 'Next' check number field across Company Codes, but only in Bank Codes where the Bank ID is the same. This occurs as you update an A/P Check Register or a Manual Check Register.

Installation

Before installing this Extended Solution, please verify that the version level(s) printed on the CD label are the same as the version level(s) of the MAS 90 MAS 200 module(s) you are using. For further information, please see the Upgrades and Compatibility section below. Check your Shipping Manifest for a complete list of Extended Solutions shipped.

For detailed installation instructions, please refer to the Sage website at:

http://support.sagesoftwareonline.com/mas/extended_solutions/main.cfm

Installing Your Extended Solutions under Windows

From a CD

If you have the *autorun* function turned on for your PC, the installation program will start up automatically. If not, find the **autorun.exe** file on your CD-ROM drive and double-click it to start the installation program. Follow the on-screen instructions.

From the Sage FTP site

When your Extended Solution is ready to be downloaded, you will receive an email from 'extendedsolutions.na@sage.com' telling you that it is ready. The email will contain the Customer Name, Cross Reference, a case-sensitive Password, a link via which you can download your Extended Solution, instructions, and a Shipping Manifest. If you have any problems with this order, please email extendedsolutions.na@sage.com and we will assist you during normal business hours.

Extended Solutions Control Center

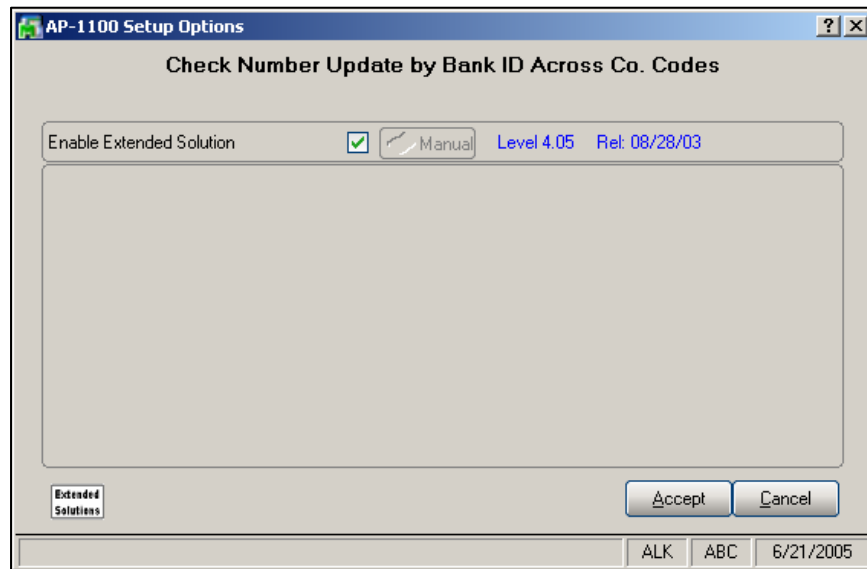
Installing any Extended Solution will add an Extended Solutions Control Center to the MAS 90 MAS 200 Library Master Utilities menu. When you open the Control Center, the following options will be available:

- Extended Solutions Manuals
- Remove Extended Solutions
- Unlock Extended Solutions
- Merge Installation Files
- Extended Solutions Setup options

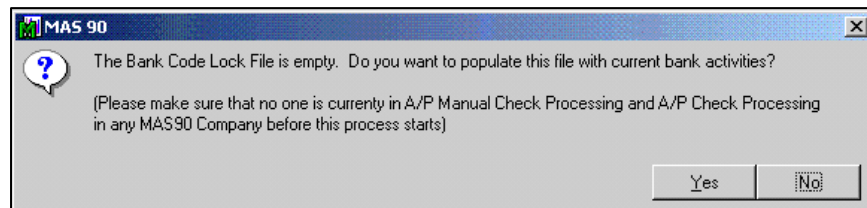
Extended Solutions

Setup

Once the disk is installed, you will need to access the Accounts Payable options screen. After the standard MAS 90 MAS 200 option screens have been displayed, a Setup screen for this Extended Solution will appear. Check the 'Enable Extended Solution' box to activate this Extended Solution (Figure 1). The manual for this Extended Solution, if it has been installed, can be viewed by clicking the 'Manual' button next to the 'Enable Extended Solution' check box. It can also be viewed via the Extended Solutions Control Center (see Installation, above).

**Figure 1**

A new Bank Code Lock file has been created to track where a Bank ID is being used. When you click the 'Accept' button on the Setup screen, if the system detects that the Bank Code Lock file is empty, you will be prompted to populate this file with current MAS 90 MAS 200 check processing activities (Figure 2).

**Figure 2**

Extended Solutions

Click 'Yes' to proceed. If a conflict is detected – i.e., two processes are using the same bank ID – you will be notified and the process will stop (Figure 3). All conflicts must be resolved before you start using this Extended Solution.

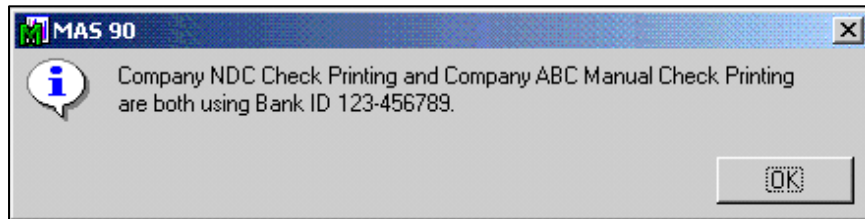


Figure 3



This Extended Solution is not company-specific; i.e., once it is enabled, it is enabled for all company codes.

You should visit this Setup screen after each upgrade or reinstallation of this Extended Solution.

Operation

This Extended Solution prohibits the use of a Bank Code if that Bank Code's Bank ID is being referenced by A/P Manual Check or A/P Check Processing anywhere in MAS 90 MAS 200.

Note: If you manually change the 'Next Check Number' in Bank Code Maintenance, the new number will NOT be updated to other company codes.

During A/P Check Printing and Manual Check Entry, when the Bank ID for the Bank Code being referenced is in use by one of these processes in another Company Code, a warning message will appear (Figure 4).

Extended Solutions

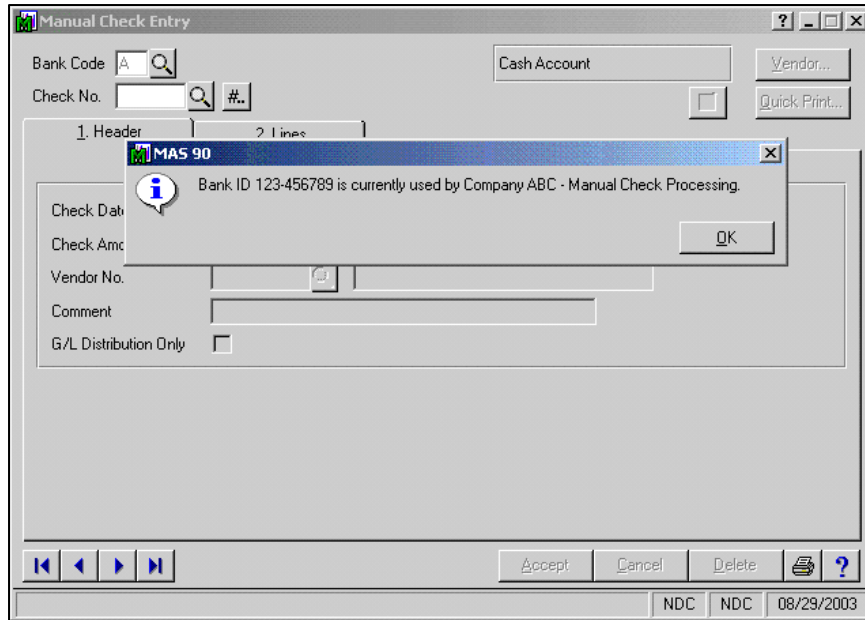


Figure 4

Whenever the 'Next Check Number' for a Bank Code is updated during Check Printing, Manual Check Printing, and Manual Check Entry, that number will be updated to all company codes' Bank Code records with matching Bank ID.

Crystal Reports and the ODBC Dictionary

The files listed below have been added or changed in the ODBC Dictionaries by this Extended Solution for Crystal Reports purposes.

<i>File:</i>	<i>Description</i>	<i>Field:</i>
SY_BCL	Bank Code Lock	All Fields

Be aware that the ODBC Dictionaries may contain other files and data fields that will be unavailable without the corresponding Extended Solutions installed.

Upgrades and Compatibility

The installation CD is labeled with the version of the MAS 90 MAS 200 module for which this Extended Solution was prepared. This Extended Solution will check its compatibility with the appropriate MAS 90 MAS 200 modules and will be disabled if an incompatibility is found. If you upgrade your MAS 90 MAS 200 modules, this Extended Solution must be upgraded as well. Your MAS 90 MAS 200 dealer can supply this upgrade.

Extended Solutions

Documentation

Only changes made by Sage Software, Inc. to the standard operation of Sage Software, Inc. MAS 90 MAS 200 have been documented in this manual. Operations not documented in this manual are standard procedures of MAS 90 MAS 200 processing. Standard MAS 90 MAS 200 processes, data entry screens, inquiry screens, reports, updates, etc., have not been changed unless addressed in this document.

Parts of this document may refer to the *Specific Purpose Rule*. When referenced, the described feature was developed for a specific client to its specifications and may not conform to generally accepted MAS 90 MAS 200 standards and procedures. These features may or may not benefit you in your application of MAS 90 MAS 200.

Acknowledgments

© 2005 Sage Software, Inc. All rights reserved. Sage Software, MAS 90, and MAS 200 are registered trademarks or trademarks of Sage Software, Inc. All other trademarks are the property of their respective owners.