

---

## Negative Check Selection for AP-1063

AP-1110

### Overview

This Extended Solution to the Accounts Payable module allows negative checks to be included in the ACH file.



This Extended Solution requires AP-1063: *Electronic Payment for Accounts Payable*.

### Installation

Before installing this Extended Solution, please verify that the version level(s) printed on the CD label are the same as the version level(s) of the MAS 90 MAS 200 module(s) you are using. For further information, please see the Upgrades and Compatibility section below. Check your Shipping Manifest for a complete list of Extended Solutions shipped.

For detailed installation instructions, please refer to the Sage website at:  
[http://support.sagesoftwareonline.com/mas/extended\\_solutions/main.cfm](http://support.sagesoftwareonline.com/mas/extended_solutions/main.cfm)

### ***Installing Your Extended Solutions under Windows From a CD***

If you have the *autorun* function turned on for your PC, the installation program will start up automatically. If not, find the **autorun.exe** file on your CD-ROM drive and double-click it to start the installation program. Follow the on-screen instructions.

### **From the Sage FTP site**

When your Extended Solution is ready to be downloaded, you will receive an email from 'extendedsolutions.na@sage.com' telling you that it is ready. The email will contain the Customer Name, Cross Reference, a case-sensitive Password, a link via which you can download your Extended Solution, instructions, and a Shipping Manifest. If you have any problems with this order, please email [extendedsolutions.na@sage.com](mailto:extendedsolutions.na@sage.com) and we will assist you during normal business hours.

### ***Extended Solutions Control Center***

Installing any Extended Solution will add an Extended Solutions Control Center to the MAS 90 MAS 200 Library Master Utilities menu. When you open the Control Center, the following options will be available:

- Extended Solutions Manuals
- Remove Extended Solutions
- Unlock Extended Solutions
- Merge Installation Files
- Extended Solutions Setup options

## Extended Solutions

## Setup

Upon completion of software installation, you will need to access Extended Solutions Setup from the Accounts Payable Setup menu. Select this part number and the Setup screen for this Extended Solution will appear (Figure 1). Check the 'Enable Extended Solution' box to activate this Extended Solution. The manual for this Extended Solution can be viewed by clicking the 'Manual' button next to the 'Enable Extended Solution' check box. It can also be viewed via the Extended Solutions Control Center (see Installation, above).

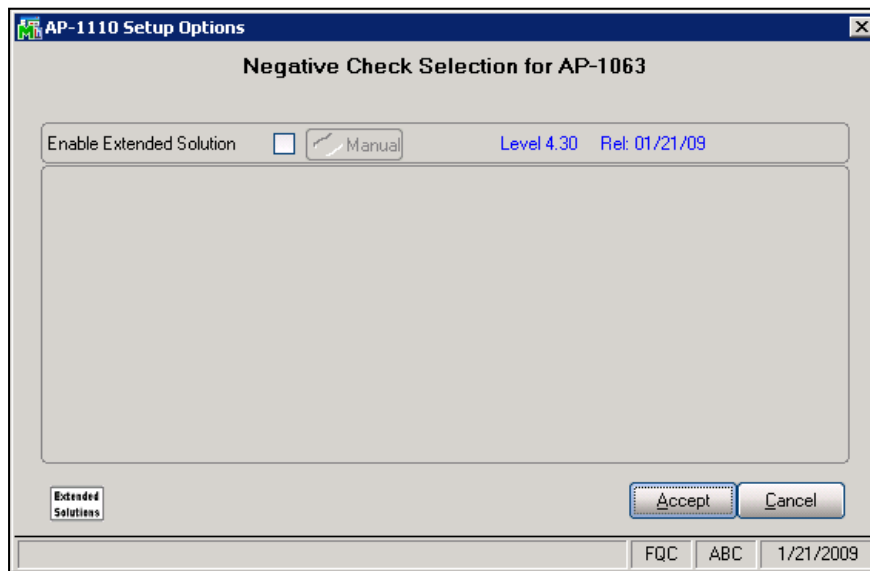


Figure 1

You should visit this Setup screen after each upgrade or reinstallation of this Extended Solution.

## Role Maintenance

The following Task has been added to Accounts Payable, Setup Options:

- Extended Solutions Setup

Please review your security setup in Role Maintenance and make appropriate changes.

## Operation

Invoice Payment Selection and Check Maintenance will now select negative check entries for payment when the Vendor is flagged for Direct Deposit via AP-1063, *Electronic Payment for Accounts Payable*. Negative payments will create debit records in the ACH file which have a transaction code of "27" for checking accounts and "37" for savings accounts.

## Extended Solutions

If you elected to 'Include Debit Record' in AP-1063 Direct Deposit Interface Setup, then a balancing credit record will be added when a negative payment debit is created. It will change the last character of the Transaction Code specified in AP-1063 for the debit record to a "2" and use that result.

Note a Negative check amount will always be 100% direct deposit even if you have the AP-1063 setup option "Allow Partial Allocation of Check Amount" checked.

### What's New

With the 01-21-09 release:

- Converted to business framework

### Upgrades and Compatibility

The installation CD is labeled with the version of the MAS 90 MAS 200 module for which this Extended Solution was prepared. This Extended Solution will check its compatibility with the appropriate MAS 90 MAS 200 modules and will be disabled if an incompatibility is found. If you upgrade your MAS 90 MAS 200 modules, this Extended Solution must be upgraded as well. Your MAS 90 MAS 200 dealer can supply this upgrade.

### Documentation

Only changes made to the standard operation of MAS 90 MAS 200 have been documented in this manual. Operations not documented in this manual are standard procedures of MAS 90 MAS 200 processing. Standard MAS 90 MAS 200 processes, data entry screens, inquiry screens, reports, updates, etc., have not been changed unless addressed in this document.

Parts of this document may refer to the *Specific Purpose Rule*. When referenced, the described feature was developed for a specific client to its specifications and may not conform to generally accepted MAS 90 MAS 200 standards and procedures. These features may or may not benefit you in your application of MAS 90 MAS 200.

### Acknowledgments

© 2009 Sage Software, Inc. All rights reserved. Sage Software, MAS 90, and MAS 200 are registered trademarks or trademarks of Sage Software, Inc. All other trademarks are the property of their respective owners.