
G/L Segment Substitution in A/P Invoice Entry

AP-1116

Overview

This Extended Solution provides G/L Segment Substitution in A/P Invoice Entry and A/P Repetitive Invoice Entry. A/P Invoice Batch processing has been modified with a prompt for a G/L Sub Account. Its value will default into the G/L Sub Account on the Invoice Header.

Installation

Before installing this Extended Solution, please verify that the version level(s) printed on the CD label are the same as the version level(s) of the MAS 90 MAS 200 module(s) you are using. For further information, please see the Upgrades and Compatibility section below. Check your Shipping Manifest for a complete list of Extended Solutions shipped.

For detailed installation instructions, please refer to the Sage website at:
http://support.sagesoftwareonline.com/mas/extended_solutions/main.cfm

Installing Your Extended Solutions under Windows From a CD

If you have the *autorun* function turned on for your PC, the installation program will start up automatically. If not, find the **autorun.exe** file on your CD-ROM drive and double-click it to start the installation program. Follow the on-screen instructions.

From the Sage FTP site

When your Extended Solution is ready to be downloaded, you will receive an email from 'extendedsolutions.na@sage.com' telling you that it is ready. The email will contain the Customer Name, Cross Reference, a case-sensitive Password, a link via which you can download your Extended Solution, instructions, and a Shipping Manifest. If you have any problems with this order, please email extendedsolutions.na@sage.com and we will assist you during normal business hours.

Extended Solutions Control Center

Installing any Extended Solution will add an Extended Solutions Control Center to the MAS 90 MAS 200 Library Master Utilities menu. When you open the Control Center, the following options will be available:

- Extended Solutions Manuals
- Remove Extended Solutions
- Unlock Extended Solutions
- Merge Installation Files
- Extended Solutions Setup options

Custom Office

If you customize your MAS 90 MAS 200, then you must run the Update Utility *every time* you install this Extended Solution.

Setup

Upon completion of software installation, you will need to access Extended Solutions Setup from the Accounts Payable Setup menu. Select this part number and the Setup screen for this Extended Solution will appear (Figure 1). Check the 'Enable Extended Solution' box to activate this Extended Solution. The manual for this Extended Solution can be viewed by clicking the 'Manual' button next to the 'Enable Extended Solution' check box. It can also be viewed via the Extended Solutions Control Center (see Installation, above).

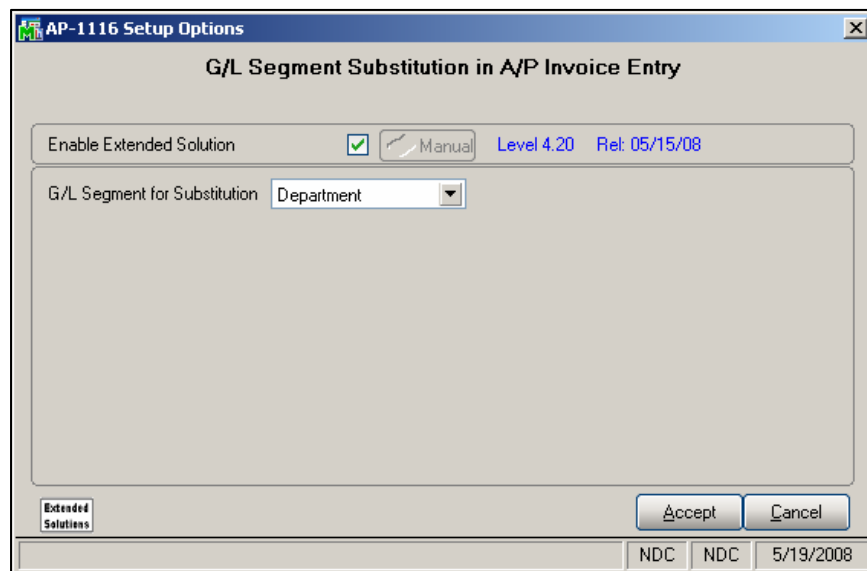


Figure 1

Answer the following prompt:

G/L SEGMENT FOR SUBSTITUTION: Select the G/L Segment for substitution from the drop down menu.

Role Maintenance

The following Task has been added to Accounts Payable, Setup Options:

- Extended Solutions Setup

Please review your security setup in Role Maintenance and make appropriate changes.

Operation

A/P Repetitive Invoice Entry and A/P Invoice Entry

A new button has been added to the A/P Invoice Entry and the A/P Repetitive Invoice Entry screens. The button will be labeled with the G/L segment selected in Setup. Click this button to bring up the G/L Sub Account prompt. Enter the appropriate value or use the Lookup button to view the segment's G/L Sub Account list (Figure 2).

Figure 2

As the G/L Account from Vendor Maintenance defaults during Line Entry, the program will default the sub account value into the G/L Account Segment specified in Setup. If the resulting account number is invalid, no account will be added to the new invoice.

- A filter has been added to the G/L Account lookup to only display those accounts with a segment match on the sub account.
- You cannot enter a G/L Account whose segment value does not match the sub account value.
- If the sub account value in invoice header is changed after lines have been entered on the invoice, G/L accounts on existing lines will not be refreshed.

Batch Processing

The G/L Sub Account prompt will appear when the 'Accept' button is clicked (Figure 3). The sub account value entered here will default into the sub account field in A/P invoice header.

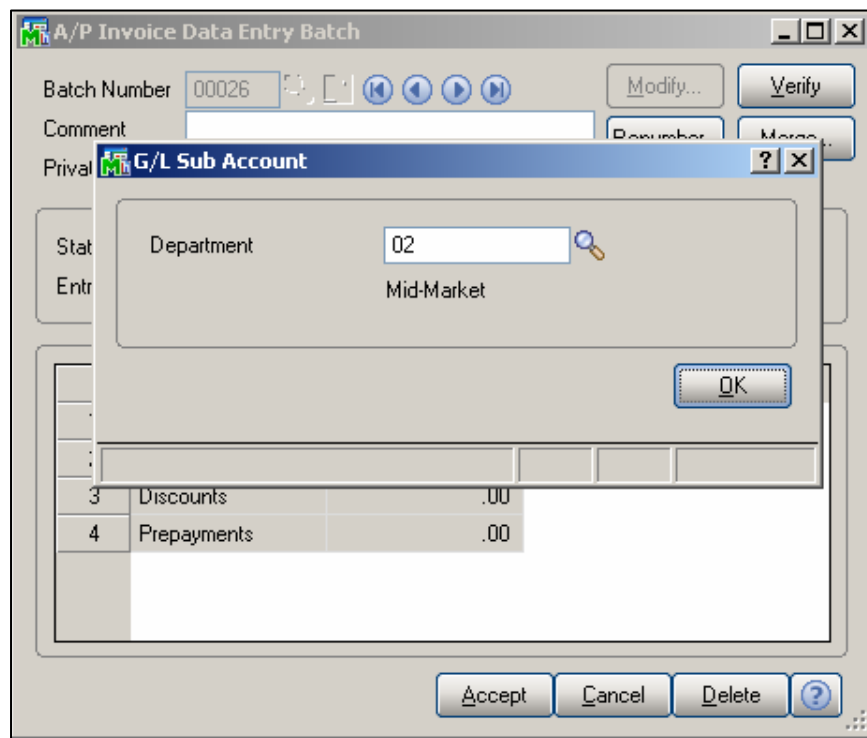


Figure 3

No changes have been made to Manual Check Entry of an on the fly Invoice.

ODBC Dictionary

The files listed below have been added, or changed, in the ODBC Dictionaries by this Extended Solution for Crystal Reports purposes.

<i>File:</i>	<i>Fields:</i>
AP_RepetitiveInvoiceHeader	SubAccountCode_001
AP_InvoiceHeader	SubAccountCode_001
GL_CompanyActiveBatch	SubAccountCode_001

Be aware that the ODBC Dictionaries may contain other files and data fields that will be unavailable without their corresponding Extended Solutions installed.

Upgrades and Compatibility

The installation CD is labeled with the version of the MAS 90 MAS 200 module for which this Extended Solution was prepared. This Extended Solution will check its compatibility with the appropriate MAS 90 MAS 200 modules and will be disabled if an incompatibility is found.

Extended Solutions

If you upgrade your MAS 90 MAS 200 modules, this Extended Solution must be upgraded as well. Your MAS 90 MAS 200 dealer can supply this upgrade.

Documentation

Only changes made to the standard operation of MAS 90 MAS 200 have been documented in this manual. Operations not documented in this manual are standard procedures of MAS 90 MAS 200 processing. Standard MAS 90 MAS 200 processes, data entry screens, inquiry screens, reports, updates, etc., have not been changed unless addressed in this document.

Parts of this document may refer to the *Specific Purpose Rule*. When referenced, the described feature was developed for a specific client to its specifications and may not conform to generally accepted MAS 90 MAS 200 standards and procedures. These features may or may not benefit you in your application of MAS 90 MAS 200.

Acknowledgments

© 2008 Sage Software, Inc. All rights reserved. Sage Software, MAS 90, and MAS 200 are registered trademarks or trademarks of Sage Software, Inc. All other trademarks are the property of their respective owners.