



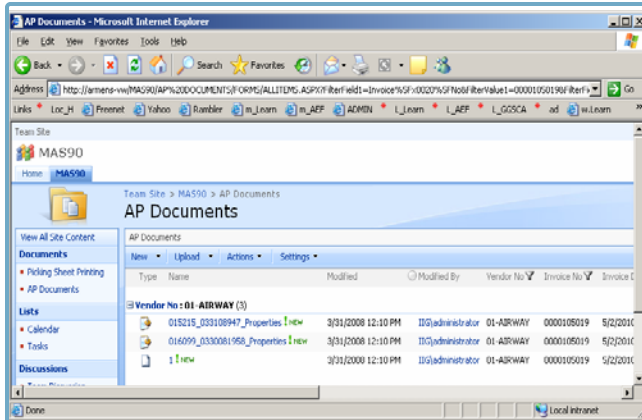
Information Integration Group, Inc.

SAGE MAS 90/200

Document Management Maestro

The Document Management Maestro developed by IIG integrates seamlessly with Sage Software's MAS90/200 ERP and Microsoft SharePoint Products. This powerful enhancement can streamline your daily operations by allowing you to manage your documents by both scanning the documents received from your business partners as well as documents printed by the MAS90/200 system. The powerful search engine allows you to view the stored images directly from the MAS90/200 programs.

Complete Document Management System for MAS90/200 ERP



- Scan A/R Checks, A/P Invoices, Customer Purchase Orders, Pick Tickets with hand written quantities or other documents such Reseller Certificates or Credit Applications directly into the system. Link documents to existing MAS90/200 transactions from the Document Scan program.
- Capture images (printouts) of system generated documents such as A/R Invoices, A/P Checks directly into the image database.
- Forward images of the A/P Invoices scanned to the proper individuals in the company for approval.
- Ability to enter the transaction information directly off the scanned images.

Specific Program Enhancements

- View the image of the Customer Checks received in Customer Inquiry, Maintenance, Invoice History Inquiry and SO/Inquiry programs.
- View the image of A/P Vendor Invoices in Invoice History View and A/P Invoice Drill downs.
- View the image of A/P Checks in Vendor Maintenance, Inquiry and Payment History Inquiry programs.
- View the image of Customer PO in Sales Order Entry, Sales/Quote History Inquiry, Sales Order Inquiry, Invoice History Inquiry programs.
- View the image of customer statement mailed in Customer Inquiry and Maintenance programs.
- View the image of customer pick tickets in Sales Order Entry, Sales/Quote History Inquiry, Sales Order Inquiry, Invoice History Inquiry programs.



Information Integration Group, Inc
www.iigservices.com

[All Other IIG Add-ons...](#)

