



## Fast Production Entry For Sage 100 2018

457 Palm Drive  
Glendale, CA 91202  
818-956-3744  
818-956-3746  
[sales@iigservices.com](mailto:sales@iigservices.com)

[www.iigservices.com](http://www.iigservices.com)



Information in this document is subject to change without notice. No part of this document may be reproduced or transmitted in any form or by any means, electronic or mechanical, for any purpose without the express written consent of Information Integration Group, Inc.

## **TRADEMARKS**

*MS-DOS* and *Windows* are trademarks of Microsoft Corporation.

SAGE 100 (formerly Sage ERP MAS 90 and 200) is registered trademark of Sage Software, Inc.

All other product names and brand names are service marks, and/or trademarks or registered trademarks of their respective companies.

## **Table of Contents**

<i>Installation Instructions and Cautions</i> .....	3
<b>Wait! Before You Install – Do You Use CUSTOM OFFICE?</b> .....	3
<b>Registering IIG products</b> .....	4
<b>ODBC Security</b> .....	5
<b>Role Maintenance</b> .....	5
<i>Introduction</i> .....	6
<b>Fast Production Entry</b> .....	6

## Installation Instructions and Cautions

**PLEASE NOTE:** *SAGE 100 must already be installed on your system before installing any IIG enhancement. If not already done, perform your SAGE 100 installation and setup now; then allow any updating to be accomplished automatically. Once SAGE 100 installation and file updating is complete, you may install your IIG enhancement product by following the procedure below.*

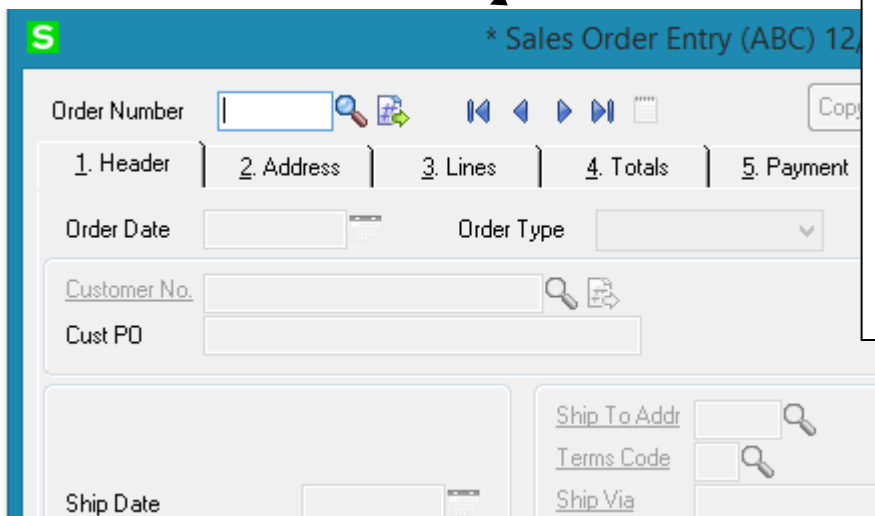
### Wait! Before You Install – Do You Use CUSTOM OFFICE?

**THIS IS AN IMPORTANT CAUTION:** *If you have Custom Office installed, **and** if you have modified any SAGE 100 screens, you must run **Customizer Update** after you do an enhancement installation.*

**But wait! BEFORE** you run **Customizer Update**, it is very important that you **print all of your tab lists**. Running **Customizer Update** will clear all Tab settings; your printed tab list will help you to reset your Tabs in Customizer Update. **Custom Office** is installed on your system if there is an asterisk in the title bar of some of the screens. The asterisk indicates that the screen has been changed.

An **asterisk** in a window's title bar indicates that the screen has been modified. This means that **Custom Office** is installed.

Follow all the instructions on this page before you run **Customizer Update!**



## Registering IIG products

IIG Enhancement should be registered to be able to use it. If registration is not performed, the enhancement will work in a demo mode for a limited time period. The registration can be still done during the demo period.

Select the **IIG Product Registration** program under the **Library Master Setup** menu of the SAGE 100.

If this option is not listed under the Library Master Setup menu, go to the main menu, and select **Run** from the **File** menu. Type in SVIIGR and click **OK**.

Enhancement	Level	Release Date	Serial Number	Unlocking Key
IIG Enhancement	6.00		AAAAAAAAAAAAAAAAAA	BBBBB

Enter **Serial Number** and **Unlocking Key** provided by IIG, and click **OK**.

If multiple IIG Enhancements are installed, Serial Numbers and Unlocking Keys should be entered for each enhancement.

Use the **Print Registration Form** button to print IIG Registration Form.

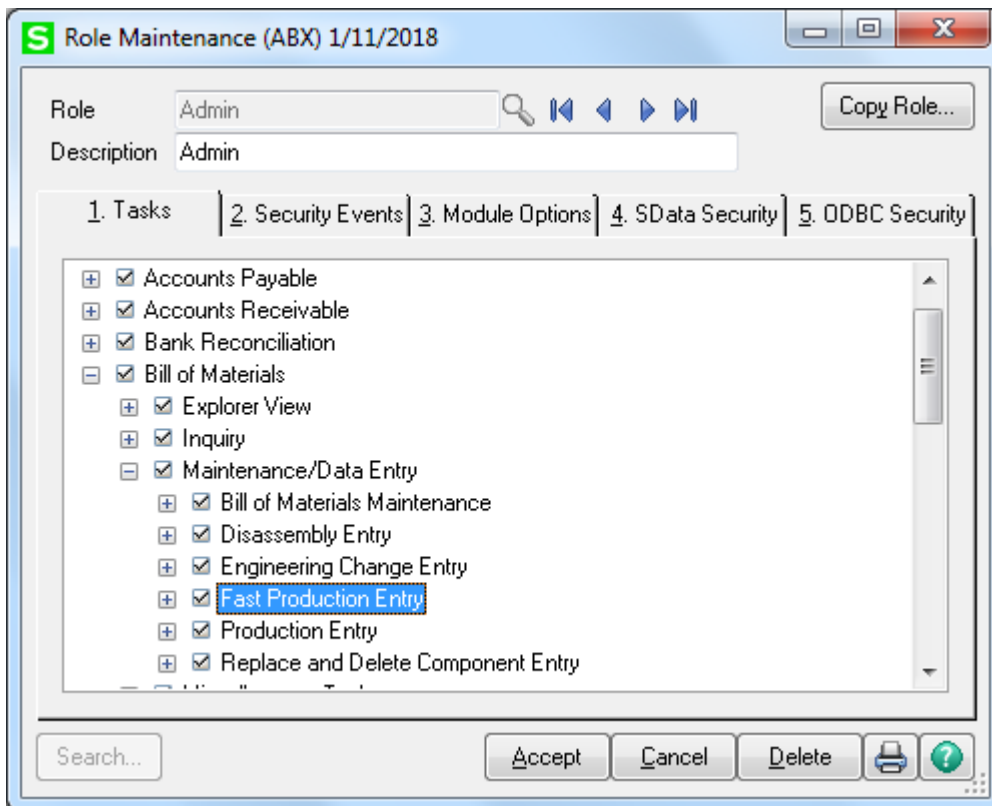
## ODBC Security

After installing an **IIG Enhancement**; it is **very important to verify** whether or not the **Enable ODBC Security within Role Maintenance** check box is selected in the **System Configuration** window of your system. If it is selected you must assign ODBC security permissions and allow access to custom data tables/fields for the Roles defined in your system.



## Role Maintenance

After installing an **IIG Enhancement**, permissions must be configured for newly created Tasks and Security Events.



## Introduction

The **Fast Production Entry** program allows entering and recording bill numbers, their quantities, types, and descriptions. This is not performed as a one-step process, like in the **Production Entry**, which means it is possible to enter several bill numbers at a time with their automatic quantities.

### Fast Production Entry

The **Fast Production Entry** program has been added under the **Main** menu of the **Bill of Materials** module.

	Bill Number	Lot/Ser Number	Quantity	Bill Type	Description
1	2480-8-50		1.0000	Standard	Desk, Teak
2	9264-1247-3547-ABCD-128345ABN		1.0000	Standard	Bookcase, 7 shelf
3	D1000-FC		1.0000	Standard	Filing Cabinet
4			.0000		

In the **Fast Production Entry** screen, it is possible to scan in items and serial numbers.

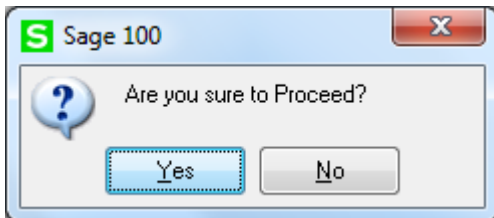
Check the **Explode Sub-Assemblies** for exploding the components of the bill items during production generation.

Check the **Automatic quantity** for setting the bill items quantity automatically.

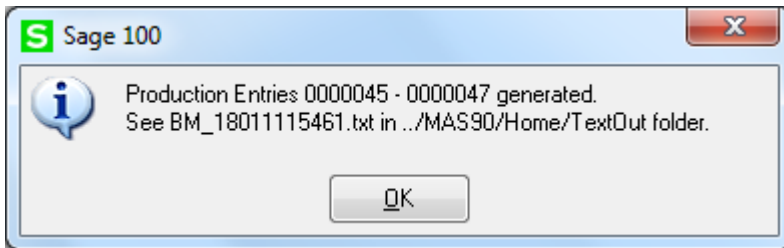
Check the **Auto Lot/Ser No.** for setting the lot/serial number automatically from the **Next Lot/Ser No** field of the **Inventory Maintenance**.

Click the **Del Row** button for deleting the rows from the grid. Deleting the last row of the grid is not allowed.

Click the **Proceed** button.  
The following message will be displayed.



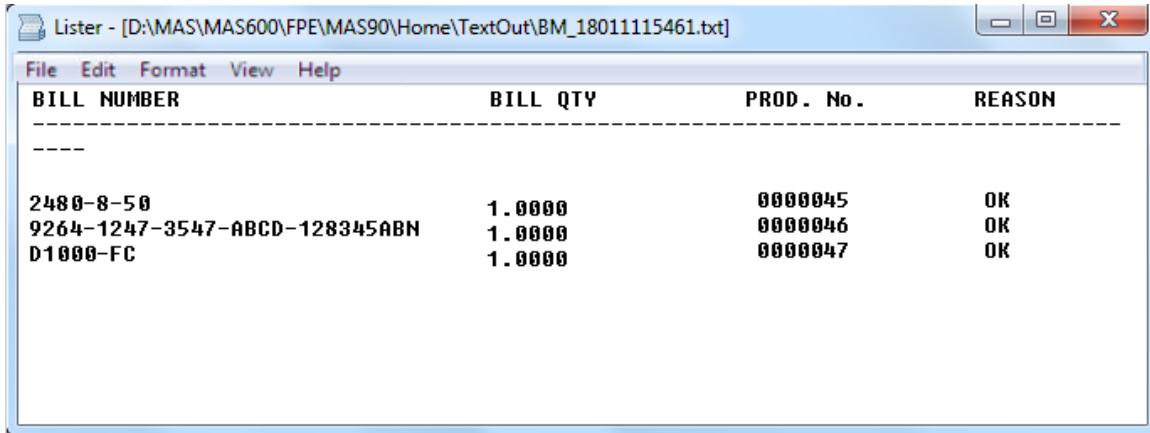
After clicking **Yes**, the Production Entry Generation program will be started.



Follow the instruction of the displayed message.

Here is the content of the output file:





-----

BILL NUMBER	BILL QTY	PROD. No.	REASON
2480-8-50	1.0000	0000045	OK
9264-1247-3547-ABCD-128345ABN	1.0000	0000046	OK
D1000-FC	1.0000	0000047	OK

Under the Reason column, following messages can appear:

Invalid bill number;

Invalid lot number;

Required options set;

No Component Lines;

Insufficient qty of item (This message appears if the quantity of the Lot/Serial component item is not enough for production generation).